

# eSharp Fundamentals

Envision a youth development program disguised as a professional music studio, and you will begin to understand eSharp. This program is designed to engage harder to reach youth, ages 14-24. While educating in digital music, recording, and musical instrumentation, eSharp has successfully provided a connection between youth and the variety of CPDC programs including GED classes out of Career and Skill Enhancement and videography programs within Youth Development.

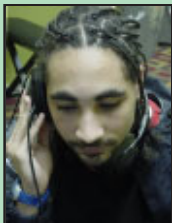
## Partnerships at work...

In 2002, CPDC approached Berklee College of Music with the idea of a youth development program functioning as a professional recording studio. Supported by CPDC's experience in youth development and Berklee's expertise in music education, the eSharp Music Center was created. The joint team aimed to create a program that went beyond piano lessons to developing young artists. eSharp staff, supported by Berklee curricula, work closely with youth to develop not only their vocal and instrumental skills, but also the skills to navigate realities of the music industry.



## Volunteers are welcome!

CPDC programs are based on partnerships at all levels, including volunteers in our programs. The eSharp Music Center benefits from the efforts of volunteers skilled in performance, instrumentation, recording, business, and youth development.



For More Information Contact us at:  
601 Edgewood Street, NE  
Washington, DC 20017  
202.832.0500, ext. 3157  
esharp@cpdc.org



## How to Reach Us

- Edgewood Terrace is located near the Rhode Island Avenue metro station in northeast DC.
- From the intersection of 4th and Rhode Island Avenue, NE, go north on 4th Street.
- After Bryant Street, turn right at the driveway marked by flags (The Vista & The View).
- Follow the driveway to the top of the cul de sac.
- Building 601, at the apex of the cul de sac, is marked by an exterior elevator on its end.
- The eSharp Music Center is located just past the elevator on the right.



Community Preservation and  
Development Corporation  
5513 Connecticut Avenue, NW  
Suite 250  
Washington, DC 20015

Phone: 202.895.8900  
Fax: 202.895.8805

a 501(c)(3) corporation

CPDC's Mission is embodied in the principles of:

**Quality:** Providing the highest quality service to our customers, staff and stakeholders by striving towards the highest possible standard of excellence

**Innovation:** Seeking creative solutions by challenging the proven norm and supporting continuous improvements through innovation

**Initiative:** Taking the initiative for creating and seizing opportunities and learning from experience by demonstrating the ability and the willingness to achieve our corporate mission

**Inclusiveness:** Building strong inclusive partnerships by fostering positive, effective relationships through collaboration

**Flexibility:** Promoting successful business opportunities by being flexible and responsive to change consistent with our mission and core values

Community Preservation and  
Development Corporation

# eSharp Music Center

Developing Vibrant Communities Through Innovation and Partnerships



# Change is a Choice - Are You Ready for eSharp?



**Experience** a full functioning studio where you can learn the skills you need to enter the music industry as a competitive player.

**Attend** our educational programs and you can master the skills to be a music producer. Explore your role in our community and you can become a musical leader.

**Operate** our studio facilities while you create your own music CD and you can become a self-reliant artist.

*By utilizing eSharp's resources, you can learn to navigate the realities of the music industry and be prepared to seize the opportunities that lead to your dreams.*

## Instruction

We understand that knowledge is power. At the core of our educational programs are technology-infused, project-based learning activities that provide hands-on opportunities to gain the knowledge needed to master professional-grade industry skills. Instructional activities cover cutting-edge music composition software and MIDI technologies. Tech learning is supported with music theory and instrumentation curriculum developed with our partner Berklee College of Music, the nation's premier institution for the study of contemporary music. Throughout the program you can choose from several "Music Education Tracks" as you determine the industry professional you wish to become.

## Finding voices, speaking out...

### Studio Services

Our studio's industry standard software and equipment affords professional recording opportunities. Once trained, new studio techs can take leadership and entrepreneurial roles in providing recording services to the industry and community. By partnering with professional music producers and volunteers, eSharp enhances the opportunities for our students and further extends our recording services to the community.



## Notes & Theory

### eSharp's Educational Tracks

**MIDI Track:** Instruction in computer-based music technology geared toward mastery of industry standard software.

**Instrumentation Track:** Instruction in classic instrumental skills, music theory, and composition. Students choose an instrument, such as piano, drums, bass, or guitar, for specialized instruction. Students on this track may audition to participate in summer programs at Berklee College of Music in Boston, MA.

**Recording & Sound Engineering Track:** Instruction in industry standard, Pro Tool-based, sound recording techniques, equipment, and software.

**Music Industry Business & Management Track:** Instruction in areas of promotion, entrepreneurship, and navigating the realities of the music industry. Classes can also include graphic design and videography.

*All tracks include instruction in artist development, enhancing creative writing, performance, image creation, and civic responsibility of the artist.*



Community Preservation and Development Corporation's mission is to develop vibrant communities through innovation and partnerships.

Visit our website at [www.cpsc.org](http://www.cpsc.org)

